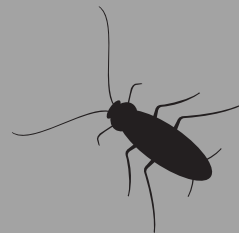


Gentrol[®] Aerosol



- CONTROLS ROACHES, STORED PRODUCT PESTS, DRAIN FLIES, AND FRUIT FLIES
- WITH GENTROL[®] IGR
- NON-REPELLENT
- DISSIPATING FOAM ASSURES COMPLETE COVERAGE
- COMPATIBLE IN BAITING PROGRAMS
- TREATS UP TO 1200 SQUARE FEET
- LONG-TERM CONTROL

SPECIMEN LABEL

ACTIVE INGREDIENT:

S-Hydroprene (CAS #65733-18-8) . . . 0.36%

OTHER INGREDIENTS*: 99.64%

Total 100.00%

*Contains petroleum distillates

EPA Reg. No. 2724-484

Made in USA

KEEP OUT OF REACH OF CHILDREN

CAUTION

See additional precautionary statements

GENERAL INFORMATION

GENTROL[®] AEROSOL contains GENTROL[®] Insect Growth Regulator. The IGR disrupts the normal development of immature cockroaches, drain flies and fruit flies, and stored product pests (examples of these pests include: Indian meal moths, rice moths, tobacco moths, red flour beetles, confused flour beetles, lesser grain borers, merchant grain beetles, sawtooth grain beetles, warehouse beetles, cigarette beetles, and dermestid beetles). Roaches exposed to GENTROL AEROSOL will become adults incapable of reproducing. GENTROL AEROSOL also disrupts the normal life cycle of drain flies, fruit flies, and stored product pests; thus, killing these insects during the pupal stage. In both cases, the cycle of an infestation ends. GENTROL AEROSOL is intended for use in, but not limited to: apartment buildings, bakeries, bottling facilities, breweries, boiler rooms, cafeterias, candy plants, grocery stores, day care centers, hospitals, residential homes, office buildings, kitchens, laboratories, cereal

processing facilities, manufacturing plants, mausoleums, meat and produce canneries, nursing homes, restaurants, schools, locker rooms, stores, taverns, warehouses, pet stores, as well as various modes of transportation, such as aircraft, buses, trucks, trailers, rail cars, and marine vessels.

GENTROL AEROSOL is intended for use as a general surface spray, spot, or crack and crevice application.

Prior to using in commercial or residential food areas, please refer to the Food Handling Establishment Applications section of the label. The preparations prior to treatment and the clean-up after application described are also to be followed for residential use.

GENTROL AEROSOL is non-repellent and should be considered an important component in a cockroach baiting program. Baits are an important part of a total cockroach control program but are not a complete solution. GENTROL AEROSOL can reach those nymphs that fail to forage to baits and the IGR stimulates egg-bearing females to leave the harborage and feed.

PRECAUTIONARY STATEMENTS

HAZARDS TO HUMANS AND DOMESTIC ANIMALS

CAUTION

Harmful if absorbed through skin. Causes moderate eye irritation. Avoid contact with eyes, skin, or clothing. Wash thoroughly with soap and water after handling. Remove contaminated clothing and wash before reuse.

FIRST AID

Call a poison control center or doctor immediately for treatment advice.

If on skin or clothing • Take off contaminated clothing. • Rinse skin immediately with plenty of water for 15-20 minutes.

If in eyes • Hold eye open and rinse slowly and gently with water for 15-20 minutes. • Remove contact lenses, if present, after the first 5 minutes, then continue rinsing eye.

Have the product container or label with you when calling a poison control center or doctor, or going for treatment. You may also contact 1-800-248-7763 for emergency medical treatment information.

NOTE TO PHYSICIAN: Contains petroleum distillates. Vomiting may cause aspiration pneumonia. If swallowed: Immediately call a poison control center or doctor. Do not induce vomiting unless told to do so by a poison control center or doctor. Do not give any liquid to the person. Do not give anything by mouth to an unconscious person.

PHYSICAL OR CHEMICAL HAZARDS

Contents under pressure. Do not use or store near heat or open flame. Do not puncture or incinerate container. Exposure to temperatures above 130° F may cause bursting. Do not apply this product in or on electrical portions of equipment due to the possibility of shock hazard.

DIRECTIONS FOR USE

It is a violation of Federal Law to use this product in a manner inconsistent with its labeling.

Shake well before use. GENTROL AEROSOL is a ready-to-use pressurized spray that may be applied to a variety of locations and surfaces to control pests. GENTROL AEROSOL may be applied as a general surface spray, spot, or crack and crevice application. The supplied extension tube can be used for crack and crevice applications. To apply as a general surface or spot application, hold can 10" to 12" away from surface to be treated. Use a sweeping motion over the surface to be treated for complete coverage. This product applies as a light foam that dissipates readily. An oily residue may be apparent in heavy applications. The visibility of the dissipating foam eliminates the possibility of missed areas. For crack and crevice applications, use the supplied extension tube and apply to wall voids, hollow table legs, tube iron, gondola frames, voids, and supports. GENTROL AEROSOL is generally non-staining, but in questionable situations, apply a small amount in an inconspicuous location. GENTROL AEROSOL may be applied once a month for continuous protection, or more often if conditions warrant.

GENERAL SURFACE APPLICATION

Apply the GENTROL AEROSOL at a rate of 16 ounces per 1200 sq ft of surface area. Applications can be made to areas such as: walls, floors, ceilings, attics, basements, gondolas, and shelving. NOTE: Prior to treating around air ducts, shut off ventilation system. Air-handling systems may be turned on immediately after application.

SPOT OR CRACK AND CREVICE APPLICATIONS

Apply GENTROL AEROSOL as a crack and crevice application using the supplied extension tube. Applications may be made directly to areas such as: wall voids, pipe chases, crevices, and false ceilings. Spot treatments can be made to areas such as: storage areas, closets, around water pipes, doors, windows, and behind and under appliances/equipment.

WAREHOUSES (NON-FOOD)

GENTROL AEROSOL may be applied as a general surface, spot, or crack and crevice treatment in non-food storage warehouses. Apply to all areas that may harbor pests, including under and between pallets.

FOOD HANDLING ESTABLISHMENT APPLICATIONS

GENTROL AEROSOL may be applied as a general surface spray, spot, or crack and crevice treatment in both food and non-food areas of food handling establishments. These establishments are defined as: places other than private residences where exposed food is held, prepared, processed, or served. It also includes areas where food items are: received, prepared, packaged, and stored, as well as enclosed food processing systems (mills, dairies, etc.). For control of drain flies and fruit flies: Apply GENTROL AEROSOL to areas of fly breeding. For drains, apply product into and around the downspout and catch basin area. Coat these areas thoroughly as fly larva develop in the scum buildup on the sides of drain pipes. Repeat applications at 2 to 4 week intervals depending upon the severity of infestation.

SURFACE SPRAY APPLICATION

Do not apply directly to food products.

GENERAL AREA TREATMENTS

Prior to application, remove or cover all food items. Also, cover all food contact surfaces (i.e., equipment, benches, shelves - areas where exposed food may be handled, held, prepared, processed, or served). If left uncovered, these areas must be thoroughly cleaned by a method capable of removing chemical residues after treatment.

PARTIAL AREA TREATMENTS

GENTROL AEROSOL can be applied to partial areas of food handling establishments in cases of small or localized infestations. For partial area treatments, a perimeter of at least 6 feet must be established, from all food handling surfaces.

SPOT OR CRACK AND CREVICE APPLICATIONS

Prior to application, remove or cover all food items in area to be treated. Do not apply directly to food or food handling surfaces.

PANTRY/CABINETS, SMALL FOOD STORAGE AREAS

Apply as a surface spray, spot treatment, or crack and crevice spray, to pantry and cupboard shelves or other areas where food is stored. Prior to spraying, remove all food containers and foodstuffs. Do not replace food containers or foodstuffs until spray has dried. Dispose of any infested food packages or materials.

WAREHOUSES (FOOD)

GENTROL AEROSOL may be applied as a general surface spray, spot, or crack and crevice treatment in warehouses where packaged food items are stored in such a way that direct contact with the foodstuff is not anticipated.

STORAGE AND DISPOSAL

Do not contaminate water, food, or feed by storage or disposal.

STORAGE

Store in a cool area away from children. Do not reuse empty container.

PESTICIDE DISPOSAL

Wastes resulting from the use of this product may be disposed of on site or at an approved waste disposal facility.

CONTAINER DISPOSAL

Wrap container and put in trash collection. Do not puncture or incinerate.

Seller makes no warranty, express or implied, concerning the use and handling of this product other than indicated on the label. Buyer assumes all risks of use and handling of this material when such use and handling are contrary to label instructions.

For more information or in case of emergency, call 1-800-248-7763 or visit our Web site: **www.zoecon.com**.

Contains no CFC or other ozone-depleting substances. Federal regulations prohibit CFC propellants in aerosols.



Wellmark International
Schaumburg, Illinois U.S.A.

GENTROL® Aerosol, GENTROL® Insect Growth Regulator and
ZOËCON® are registered trademarks of Wellmark International.

March 2003
Schaumburg, IL